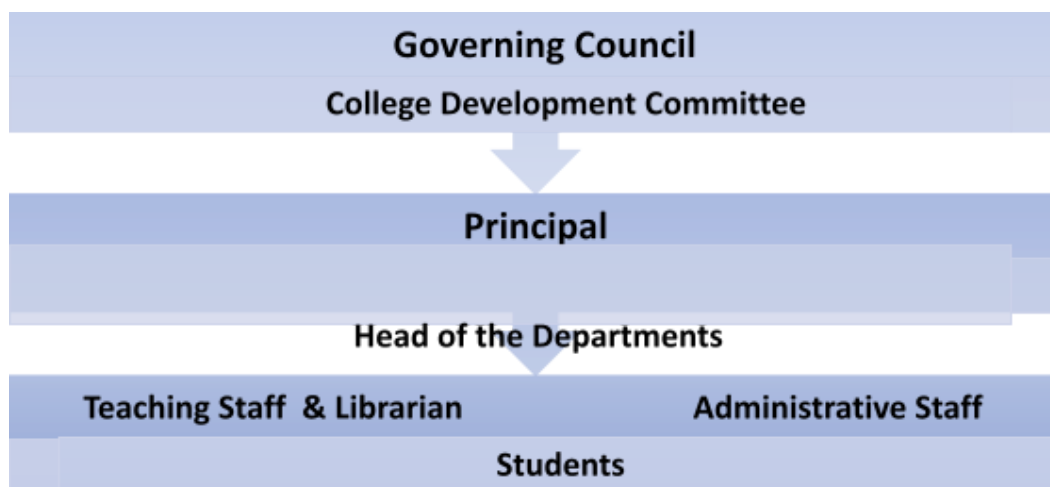


6.2.2 Describe the organogram of the Institution within a maximum of 200 words.

Institutional Set-up and hierarchy:

The Governing Body of Vile Parle Mahila Sangh takes utmost care in Policy making and College Development Committee handles the issues about administration, infrastructure, students' requirements, etc. The decision-making procedures are made at appropriate levels in the organizational hierarchy. Statutory bodies such as IQAC Cell, Anti-ragging Cell, Grievance Redressal Cell, Internal Complaints Committee etc. addressed the issues as per the university/government rules and regulations which are also a part of the organizational structure of the institution.

Organogram of the institution



Organogram of Teaching and Non-teaching staff:

Our college is affiliated to S.N.D.T. Women's University, Mumbai and abides by all the rules and regulations of the same. Department heads supervise individual departments. Faculty members are ranked, in descending order, as Professor, Associate Professor, and Assistant Professor.

The institutional administration is led by Office Superintendent. The Office Superintendent provides leadership and direction for administrative functions that generally includes admissions, student services, institutional support, maintenance and correspondence to stake holders.